

Planetary gearboxes for mobile applications

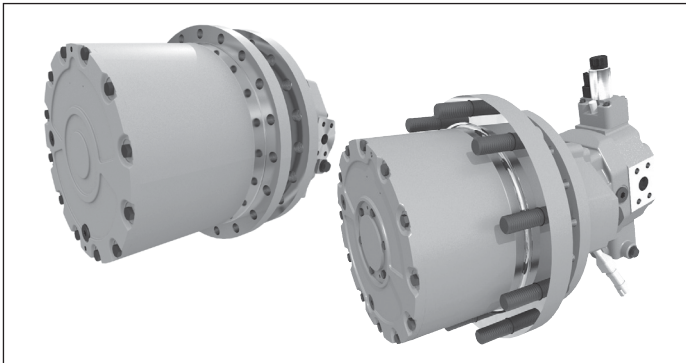
HYDROTRAC GFT 8000

Series 40

RE 77117

Edition: 05.2021

Replaces: 04.2021



- ▶ Sizes 8105 to 8190
- ▶ Output torques from 7000 to 130000 Nm

Features

- ▶ Compact, space-saving two- or three-stage planetary gearbox
- ▶ Robust design
- ▶ Integrated static multiple-disk parking brake
- ▶ Several sizes also with dynamic brake
- ▶ Assembly of variable plug-in and fixed plug-in motors different series possible
- ▶ For open and closed circuits
- ▶ Easy assembly
- ▶ Disconnect mechanism (optional)
- ▶ Wheel studs (optional)

Contents

Description	2
Technical data	2
Application conditions	2
Dimensions	3
Overview data sheets Gearbox Technology	4

Additional information at:
www.boschrexroth.com/gears



Description

The hydrostatic compact drive series 40 consists of a two- or three-stage planetary gearbox, which - in combination with a hydraulic axial piston motor - builds a space-saving drive unit. The complete unit is used as a drive component for wheel- or chain driven vehicles and other mobile applications.

Application conditions

The planetary gearboxes are designed for use in environmental temperatures between -25°C and +40°C. Environmental factors such as salt water, salt air, sand, dust, pressure, severe shocks, extreme shock loads and environmental temperatures, aggressive media, etc. affect the function. Such influences must be pre-announced in order for a secure gearbox design.

Technical data

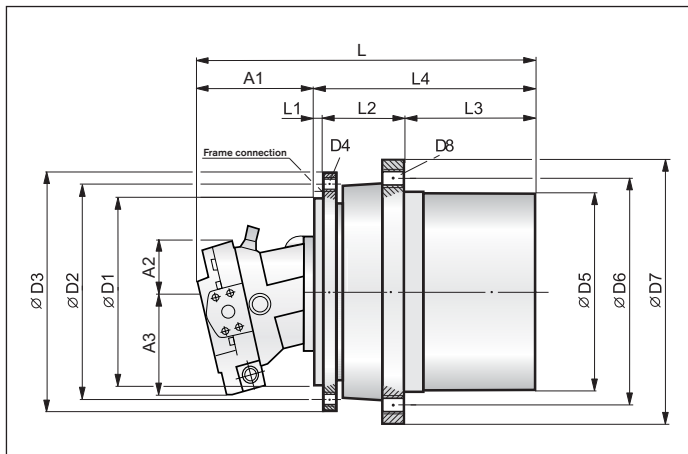
Size GFT	Nominal output torque Nm	Ratio <i>i</i>	Brake torque static Nm	Brake torque dynamic Nm	Appr. weight without motor kg	Compatible hydraulic motors
8105 E	7000	16.3 • 19.1 • 25.1 ⁸⁾ • 32.2 ⁸⁾	²⁾	-	46.5	A10VM 45 • 63
8110 E	10000	25.2 • 39.2 • 47.1 • 54.7	²⁾	-	55	A2FEN 28 • 32 • 37 • 45 / A2FEM 23 • 28 • 32 / A6VE 28 / A10FE 28 ⁴⁾ • 40 ⁴⁾ • 45 ⁴⁾ / A10VE 28 ⁵⁾ • 45 ⁵⁾
8120 E ¹⁾	15000	19.0 • 24.0 • 26.1 • 32.1 • 36.4 • 39.1 ⁹⁾	²⁾	³⁾	80	A2FEN 56 • 63 • 80 / A2FEM 45 • 56 • 63 / A2FEH 45 • 56 • 63 / A6VE 55 • 60 • 80 ^{6) 7)} • 85 ^{6) 7)}
8130 E ¹⁾	20000	26.0 • 32.3 • 39.2 • 50.6 ⁹⁾	²⁾	³⁾	85	A2FEN 63 • 80 • 90 ⁷⁾ • 107 ⁷⁾ / A2FEM 56 • 63 • 80 ⁷⁾ • 90 ⁷⁾ / A2FEH 56 • 63 • 80 ⁷⁾ • 90 ⁷⁾ / A6VE 55 • 60 • 80 ⁷⁾ • 85 ⁷⁾
8140 F	30000	90.4 • 102.8 • 120.4 • 137.1	²⁾	-	95	A2FEN 56 • 63 • 80 / A2FEM 45 • 56 • 63 / A2FEH 45 • 56 • 63 / A6VE 55 • 60
8144 E ^{6) 9)}	30000	23.0 • 26.4 • 31.3	²⁾	³⁾	180	A6VE 115 • 160 • 170
8145 F	36000	115.0 • 138.8 • 161.0	²⁾	-	120	A2FEN 56 • 63 • 80 / A2FEM 45 • 56 • 63 / A2FEH 45 • 56 • 63 / A6VE 55 • 60 • 80 • 85
8150 E ¹⁾	42000	32.3 • 35.4 • 41.4 • 50.6	²⁾	³⁾	200	A2FEN 90 • 107 / A2FEM 80 • 90 / A2FEH 80 • 90 / A6VE 80 • 85 • 107 • 115 • 160 • 170
8160 F	52000	73.8 • 100.5 • 116.1 • 138.9 ⁹⁾	²⁾	-	240	A2FE • 125 / A2FEN 90 • 107 / A2FEM 80 • 90 • 107 / A2FEH 80 • 90 • 107 / A6VE 80 • 85 • 107 • 115
8170 F	70000	95.0 • 107.3 • 124.1 • 140.5	²⁾	-	250	A2FE • 125 / A2FEN 90 • 107 / A2FEM 80 • 90 • 107 / A2FEH 80 • 90 • 107 / A6VE 107 • 115
8180 E	70000	44.1 • 50.6 • 54.7	²⁾	-	330	A6VE 160 • 170 • 200 • 215
8185 F	100000	76.4 • 98.7 • 110.0 • 126.6 • 147.0 ⁹⁾ • 185.1 ⁹⁾	²⁾	-	400	A2FE 125 • 160 • 180 / A2FEM 107 / A2FEH 107 / A6VE 107 • 115 • 160 • 170
8190 F	130000	93.8 • 121.1 • 140.1 • 167.9 ⁹⁾ • 209.0 ⁹⁾	²⁾	-	460	A2FE 125 • 160 • 180 / A2FEM 107 / A2FEH 107 / A6VE 107 • 115 • 160 • 170

Other design variants on request

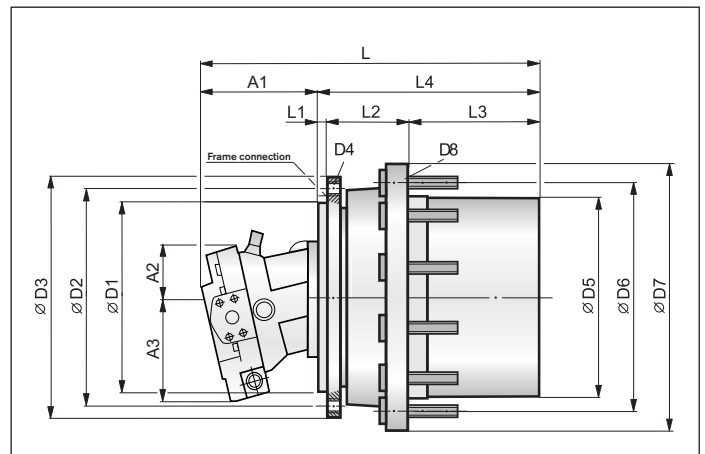
- 1) Size also available with dynamic brake (not technical combinable with all in the size listed hydraulic motors)
 2) Depending on motor size
 3) Device-specific
 4) Motor mounting position 180° turned

- 5) Gearbox equipment with brake only with motor special construction
 6) Only in combination with dynamic brake
 7) Motor size cannot be combined with version T
 8) On request
 9) Ratio cannot be combined with disconnect mechanism

Dimensions



Version T (with thread hole)



Version W (with wheel studs)

Size GFT	Version	D1	D2	D3	D4	D5	D6 mm	D7	D8	L	L1	L2	L3	L4	A1	A2	A3
8105 E	W	210	244	268	9x 5/8"-11UNC-2B	200.8	241.3	280	9x 5/8"-18UNF-2A ⁷⁾	¹⁾	10	106	104	220	²⁾	²⁾	²⁾
8110 E	T	210	244	268	12x M14	230	260	284	16x M16	¹⁾	15	60	166	241	²⁾	²⁾	²⁾
8110 E	W	210	244	268	12x M14	230	275	310	12x ³⁾	¹⁾	15	60	166	241	²⁾	²⁾	²⁾
8120 E	T	240	275	300	18x M16	270	305	335	16x M16	¹⁾	14	75	163.5	252.5	²⁾	²⁾	²⁾
8120 E	W	270	300	325	18x M16	280	335	372	10x ⁴⁾	¹⁾	14	90	148.5	252.5	²⁾	²⁾	²⁾
8130 E	T	250	290	320	16x M20	280	305	330	16x M16	¹⁾	14	82	166	262	²⁾	²⁾	²⁾
8130 E	W	270	300	325	18x M16	280	335	372	10x ⁵⁾	¹⁾	14	90	158	262	²⁾	²⁾	²⁾
8140 F	T	240	285	320	20x M20	280	305	330	20x M16	¹⁾	14	82	195.5	291.5	²⁾	²⁾	²⁾
8144 E	W	300	340	374	16x M20x1.5	350	400	435	12x ⁶⁾	¹⁾	14	90	215	319	²⁾	²⁾	²⁾
8145 F	T	270	310	350	16x M20	320	350	380	20x M16x1.5	¹⁾	10	90	200	300	²⁾	²⁾	²⁾
8150 E	T	330	370	410	20x M20	360	400	440	16x M20	¹⁾	12	90	252.5	354.5	²⁾	²⁾	²⁾
8150 E	W	330	370	410	19x M20	365	415	455	12x ⁶⁾	¹⁾	12	90	252.5	354.5	²⁾	²⁾	²⁾
8160 F	T	330	370	410	20x M20	360	400	440	16x M20	¹⁾	14	114	254	382	²⁾	²⁾	²⁾
8170 F	T	330	370	410	20x M20x1.5	400	450	490	20x M20x1.5	¹⁾	14	90	284	388	²⁾	²⁾	²⁾
8180 E	T	380	430	480	20x M24	430	480	520	24x M24	¹⁾	14.5	148	229.5	392	²⁾	²⁾	²⁾
8185 F	T	380	430	480	20x M24	430	480	520	20x M24	¹⁾	23	148	283.5	464.5	²⁾	²⁾	²⁾
8190 F	T	420	460	500	24x M24	460	500	540	36x M18x1.5	¹⁾	21.5	165	294	480.5	²⁾	²⁾	²⁾

The values given under „Dimensions“ conform to the standard connecting dimensions. By various motor/gearbox-combinations additional check of the measurements from the motor flange and the gearbox connecting dimensions. Other dimensions on request

1) Depending on motor size

2) Depending on motor size and control device

3) GFT 8110 E

12 x 3/4" x 16UNF-2A effective length = 40 mm

12 x M20 x 1.5 effective length = 58 mm

4) GFT 8120 E

10 x 3/4" x 16UNF-2A effective length = 40 mm

10 x M22 x 1.5 effective length = 55 mm

10 x M22 x 1.5 effective length = 77 mm

5) GFT 8130 E

10 x M22 x 1.5 effective length = 62 mm

10 x M22 x 1.5 effective length = 67 mm

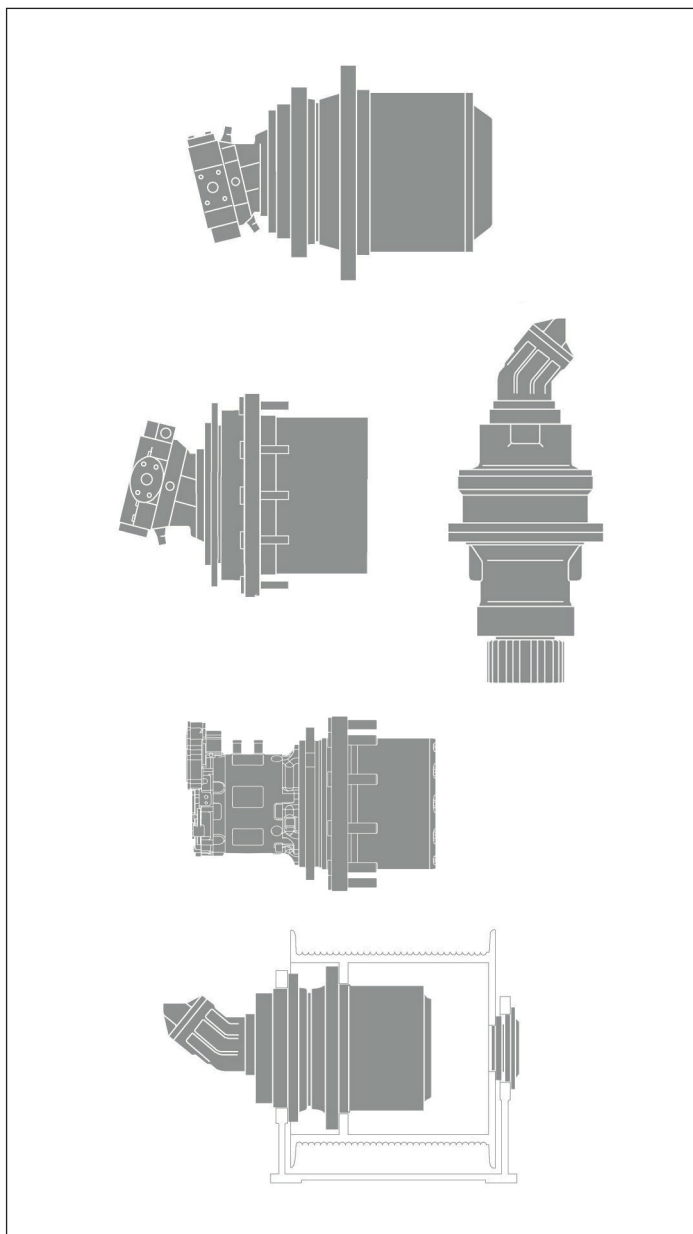
6) GFT 8144 E / GFT 8150 E

12 x M22 x 1.5 effective length = 50 mm

7) GFT 8105 E

9x 5/8" -18UNF-2A effective length = 38 mm

Overview data sheets Gearbox Technology



Hydrostatic travel drives

- HYDROTRAC GFT Large (>130 kNm), series 20, RE 77110, Output torques from 160 to 620 kNm
- HYDROTRAC GFT 2160, series 20, RE 77125
Output torque max. 42,5 kNm
- HYDROTRAC GFT 8000, series 20, RE 79099
Output torques from 7 to 15 kNm
- HYDROTRAC GFT 8000, series 30, RE 77128
Output torques from 20 to 30 kNm
- HYDROTRAC GFT 8000, series 40, RE 77117
Output torques from 7 to 130 kNm
- HYDROTRAC GFT 8150 with TIS, RE 79093
Output torque max. 42 kNm
- HYDROTRAC GFT 45 T2/T3, RE 77115
Output torque max. 45 kNm
- HYDROTRAC GFT 34, series 20, RE 79062
Output torque max. 34 kNm

Electromechanical travel drives

- ROTATRAC eGFT 8000, series 40, RE 79082
Output torques from 15 to 42 kNm

Hydrostatic swing drives

- MOBILEX GFB, RE 77201
Output torques from 4 to 68,3 kNm
- MOBILEX GFB 2160, series 20, RE 77208
Output torque max. 14,5 kNm
- MOBILEX GFB 8000, series 40, RE 79058
Output torques from 4,5 to 54 kNm

Hydrostatic winch gears

- MOBILEX GFT-W Large (>105 kNm), RE 77502
Output torques from 140 to 325 kNm
- MOBILEX GFW 5000, series 40, RE 77506
Output torques from 7,5 to 105 kNm

Bosch Rexroth AG

Gearbox Technology
Nortkirchenstr. 53
44263 Dortmund, Germany
Phone +49 231 22819-5
info.gears@boschrexroth.de
www.boschrexroth.com/gears

© Bosch Rexroth AG 2019. All rights reserved, also regarding any disposal, exploitation, reproduction, editing, distribution, as well as in the event of applications for industrial property rights. The data specified within only serves to describe the product. No statements concerning a certain condition or suitability for a certain application can be derived from our information. The information given does not release the user from the obligation of own judgment and verification. It must be remembered that our products are subject to a natural process of wear and aging.