

Axial piston variable motor A10VER Series 52



- ▶ Reversible axial piston motor for fan drives
- ▶ Sizes 18 to 45
- ▶ Nominal pressure 280 bar
- ▶ Maximum pressure 350 bar
- ▶ Open circuit

Features

- ▶ Variable motor with axial piston rotary group in swashplate design for hydrostatic fan drives in open circuits
- ▶ The output speed is proportional to the inlet flow
- ▶ The output torque increases proportionally with the pressure difference between the high- and low-pressure sides and increasing displacement
- ▶ Specially developed for hydrostatic fan drives
- ▶ The A10VER variable motor is equipped with an overcenter rotary group with a maximum displacement of $\pm 100\% V_{g, \max}$. This allows reversing operation without the need for costly additional components to reverse the air flow and to clean the cooler from contaminations which leads to fuel savings due to improved cooling performance.
- ▶ The energy efficiency of hydraulic fan drives is increased due to the elimination of external reversing valves.
- ▶ Stable bearing for long service life
- ▶ High maximum permissible output speed
- ▶ Favorable power-to-weight ratio – compact dimensions
- ▶ Low noise

Contents

Type code	2
Hydraulic fluids	3
Working pressure range	5
Technical data	6
EZ – Two-point control, electric	8
Dimensions, sizes 18, 23, 28	9
Dimensions, sizes 37 and 45	11
Anti cavitation valve	13
Speed sensing	14
Connector for solenoids	15
Installation instructions	16
Project planning notes	18
System solution for hydrostatic fan drives with reversing function	19
Safety instructions	20

Type code

01	02	03	04	05	06	07	08	09	10	11	12	13
A10V	ER			/	52	R	-	V		F		P

Axial piston unit 18...45

01	Swashplate design, variable, nominal pressure 280 bar, maximum pressure 350 bar	●	A10V
----	---	---	-------------

Operating mode 18...45

02	Motor, plug-in version, open circuit; reversible +/- 100%	●	ER
----	---	---	-----------

Size (NG)¹⁾

03	For geometric displacement, see table of values, page 6	18	23	28	37	45
----	---	-----------	-----------	-----------	-----------	-----------

Control device 18...45

04	Two-point control	U = 12 V	with shifting time orifice	●	EZ6
	electric with switching solenoid	U = 24 V	with shifting time orifice	●	EZ7

Series 18...45

05	Series 5, index 2	●	52
----	-------------------	---	-----------

Direction of rotation²⁾ 18...45

06	Viewed on drive shaft	clockwise (cooling operation)	●	R
----	-----------------------	-------------------------------	---	----------

Sealing material 18...45

07	FKM (fluoroelastomer)	●	V
----	-----------------------	---	----------

Drive shaft 18...45

08	Conical shaft with woodruff key and UNF threaded bolt	●	C
	Conical shaft with woodruff key and metric threaded bolt	●	Y

Mounting flange 18 23 28 37 45

09	Special flange similar to SAE J744 101-2 (B)	Version with hole	○	○	○	●	●	F
	Special flange similar to SAE J744 101-2 (B)	Version with slotted hole	●	●	●	○	○	U

Working port 18 23 28 37 45

10	SAE flange ports fastening thread, metric	same side	●	●	●	●	●	10N00
	Threaded port, metric	same side	○	○	○	○	○	16N00
	SAE flange ports fastening thread, UNF	same side	●	●	●	●	●	60N00
	Threaded port, UNF	same side	○	○	○	○	○	66N00

Valves 18 23 28 37 45

11	without	●	●	●	●	●	0
	integrated anti cavitation valve	●	●	●	●	●	2
	integrated anti cavitation valve and pressure relief valve	○	○	○	○	○	4

Speed sensing 18 23 28 37 45

12	without speed sensing	●	●	●	●	●	
	Hall speed sensor mounted DSA1 ³⁾	-	-	-	●	●	B

Connector for solenoids 18...45

13	DEUTSCH – molded connector, 2-pin – without suppressor diode (for electric controls)	●	P
----	--	---	----------

● = Available ○ = On request - = Not available

Notes

Observe the project planning notes on page 18 or the project planning and commissioning instructions 90363.

- 1) Additional sizes available on request
- 2) Additional directions of rotation available on request
- 3) Specify type code of sensor in accordance with data sheet 95133 – DSA1 separately and observe the requirements for the electronics.

Hydraulic fluids

The A10VER variable motor is designed for operation with HLP mineral oil according to DIN 51524. See the following data sheets for application instructions and requirements for hydraulic fluids before the start of project planning:

- ▶ 90220: Hydraulic fluids based on mineral oils and related hydrocarbons
- ▶ 90221: Environmentally acceptable hydraulic fluids

Selection of hydraulic fluid

Bosch Rexroth evaluates hydraulic fluids on the basis of the Fluid Rating according to the technical data sheet 90235.

Hydraulic fluids with positive evaluation in the Fluid Rating are provided in the following technical data sheet:

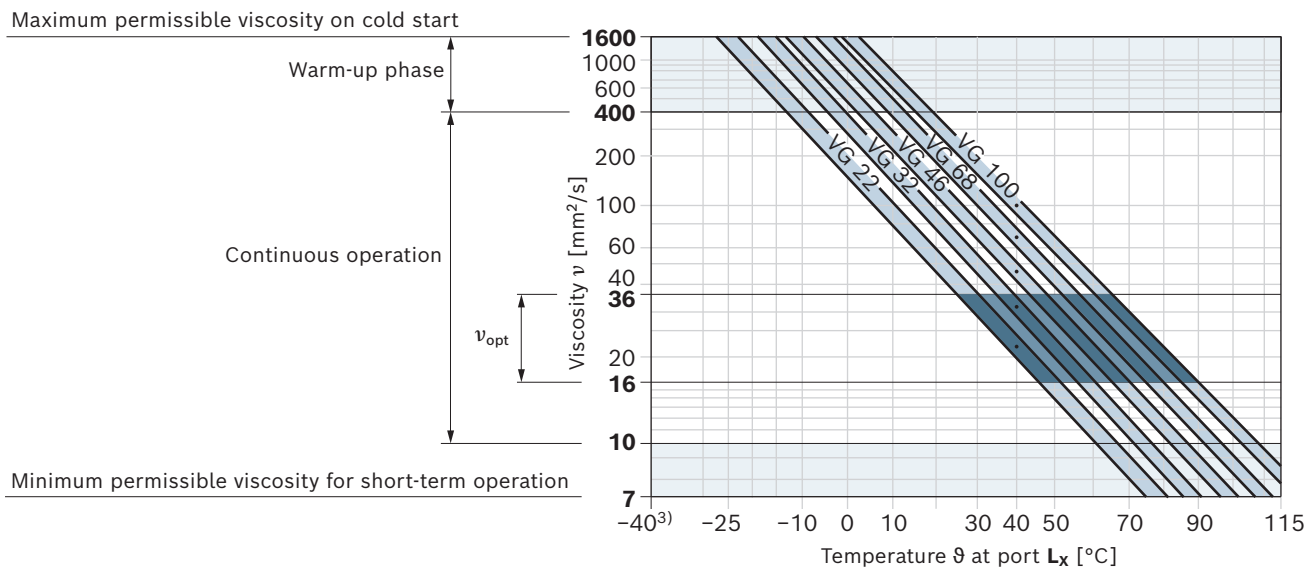
- ▶ 90245: Bosch Rexroth Fluid Rating List for Rexroth hydraulic components (pumps and motors)

The hydraulic fluid should be selected so that the operating viscosity in the operating temperature range is within the optimum range (v_{opt} ; see selection diagram).

Viscosity and temperature of hydraulic fluids

	Viscosity	Shaft seal	Temperature ²⁾	Comment
Cold start	$v_{max} \leq 1600 \text{ mm}^2/\text{s}$	FKM	$\vartheta_{St} \geq -25 \text{ }^\circ\text{C}$	$t \leq 3 \text{ min}$, without load ($p \leq 50 \text{ bar}$), $n \leq 1000 \text{ rpm}$ Permissible temperature difference between axial piston unit and hydraulic fluid in the system maximum 25 K
Warm-up phase	$v = 1600 \dots 400 \text{ mm}^2/\text{s}$			$t \leq 15 \text{ min}$, $p \leq 0.7 \times p_{nom}$ and $n \leq 0.5 \times n_{nom}$
Continuous operation	$v = 400 \dots 10 \text{ mm}^2/\text{s}^{1)}$	FKM	$\vartheta \leq +110 \text{ }^\circ\text{C}$	measured at port L_x
	$v_{opt} = 36 \dots 16 \text{ mm}^2/\text{s}$			optimal operating viscosity and efficiency range
Short-term operation	$v_{min} = 10 \dots 7 \text{ mm}^2/\text{s}$	FKM	$\vartheta \leq +110 \text{ }^\circ\text{C}$	$t \leq 3 \text{ min}$, $p \leq 0.3 \times p_{nom}$, measured at port L_x

▼ Selection diagram



1) This corresponds, for example on the VG 46, to a temperature range of +4 °C to +85 °C (see selection diagram)

2) If the temperature at extreme operating parameters cannot be adhered to, please contact us.

3) For applications in the low-temperature range, please contact us.

Filtration of the hydraulic fluid

Finer filtration improves the cleanliness level of the hydraulic fluid, which increases the service life of the axial piston unit.

A cleanliness level of at least 20/18/15 under ISO 4406 should be maintained.

At a hydraulic fluid viscosity of less than 10 mm²/s (e.g. due to high temperatures during short-term operation) at the drain port, a cleanliness level of at least 19/17/14 under ISO 4406 is required.

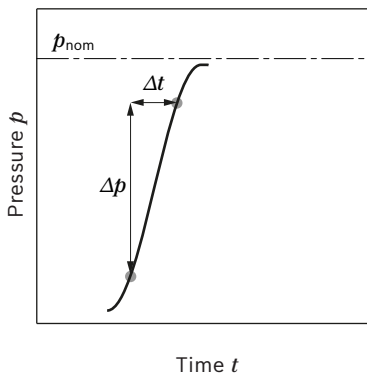
For example, viscosity is 10 mm²/s:

- At a temperature of 73 °C for HLP 32
- At a temperature of 85 °C for HLP 46

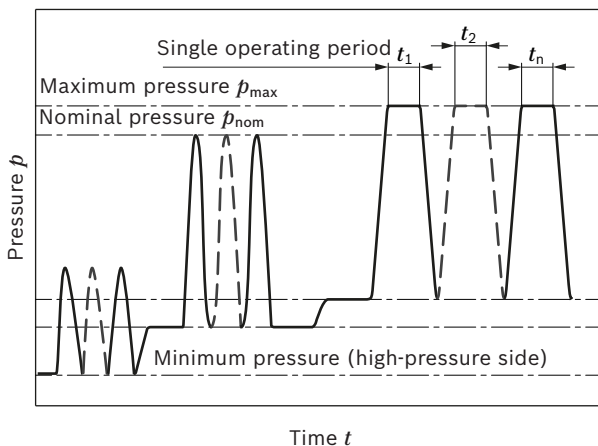
Working pressure range

Pressure at working port B		Definition
Nominal pressure p_{nom}	280 bar	The nominal pressure corresponds to the maximum design pressure. The series control of motors is not permissible.
Maximum pressure p_{max}	350 bar	The maximum pressure corresponds to the maximum working pressure during a single operating period. The sum of single operating periods must not exceed the total operating period.
Single operating period	2.5 ms	
Total operating period	300 h	
Minimum pressure $p_{MD abs}$ (high-pressure side)	20 bar	Minimum pressure on the high-pressure side (B) which is required in order to prevent damage to the axial piston unit.
Reversing pressure $p_{Rev abs}$ (high-pressure side)	<50 bar	The Δ pressure between A and B at which the system switches from fan operation to reversing operation and then from reversing operation back to fan mode is between 30 and 45 bar (relative). The pressure in B must be less than 50 bar.
Rate of pressure change $R_{A max}$	16000 bar/s	Maximum permissible pressure build-up and reduction speed during a pressure change across the entire pressure range.
Pressure at low-pressure port A		
Minimum pressure $p_{ND min}$	Standard 2 bar abs.	Minimum pressure at low-pressure port A (outlet) that is required in order to avoid damage to the axial piston unit.
Maximum pressure $p_{ND max}$	30 bar abs.	
Case pressure at port L		
Maximum pressure $p_{L max}$		
Operation as a motor, open circuit	2 bar abs.	

▼ Rate of pressure change $R_{A max}$



▼ Pressure definition



Total operating period = $t_1 + t_2 + \dots + t_n$

Notice

- ▶ Working pressure range applies when using mineral oil-based hydraulic fluids. Please contact us for values for other hydraulic fluids.
- ▶ In addition to the hydraulic fluid and the temperature, the service life of the shaft seal is influenced by the rotational speed of the axial piston unit and the case pressure.
- ▶ The case pressure must be greater than the ambient pressure.

Flow direction

Direction of rotation	at $V_{g max +}$	$V_{g max -}$
Motor with unchanged pressure side B	+ 100%	- 100%
(de-energized) clockwise	B to A	
(energized) counter-clockwise	B to A	

Technical data

Size	NG		18	23	28	37	45	
Displacement geometric, per revolution	+ 100 % $V_{g \max}$	cm ³	18	23	28	37	45	
	- 100 % $V_{g \max}$	cm ³	18	23	28	37	45	
Maximum rotational speed ¹⁾	at $V_{g \max}$	n_{nom}	rpm	3000	3000	3000	2200	2000
Rotational speed minimum ¹⁾	at continuous operation	n_{nom}	rpm	250	250	250	250	250
Torque	at $V_{g \max}$ and $\Delta p = 280$ bar	M	Nm	80	102	125	165	200
Rotary stiffness	C	c	Nm/rad	24160	24160	24160	32380	32380
Drive shaft	Y	c	Nm/rad	24160	24160	24160	32380	32380
Moment of inertia of the rotary group		J_{TW}	kgm ²	0.0017	0.0017	0.0017	0.0033	0.0033
Maximum angular acceleration ²⁾		α	rad/s ²	5500	5500	5500	4000	4000
Case volume		V	l	0.6	0.6	0.6	0.7	0.7
Weight without through drive (approx.)		m	Kg	14	14	14	18	18

Determining the operating characteristics	
Inlet flow	$q_v = \frac{V_g \times n}{1000 \times \eta_v}$ [l/min]
Torque	$M = \frac{V_g \times \Delta p \times \eta_{hm}}{20 \times \pi}$ [Nm]
Power	$P = \frac{2 \pi \times M \times n}{60000} = \frac{q_v \times \Delta p \times \eta_t}{600}$ [kW]
Output speed	$n = \frac{q_v \times 1000 \times \eta_v}{V_g}$ [rpm]
Key	
V_g	= Displacement per revolution [cm ³]
Δp	= Differential pressure [bar]
n	= Rotational speed [rpm]
η_v	= Volumetric efficiency
η_{hm}	= Hydraulic-mechanical efficiency
η_t	= Total efficiency ($\eta_t = \eta_v \times \eta_{hm}$)
M_K	= Torque constant

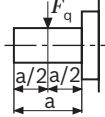
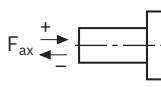
Notice

- ▶ Theoretical values, without efficiency and tolerances; values rounded
- ▶ Operation above the maximum values or below the minimum values may result in a loss of function, a reduced service life or in the destruction of the axial piston unit. Bosch Rexroth recommends testing the load by means of experiment or calculation / simulation and comparison with the permissible values.

1) The following values apply:
 - at abs. pressure $p_{\text{abs}} = 2$ bar at the low-pressure port **A**
 - for the optimum viscosity range from $\nu_{\text{opt}} = 36$ to 16 mm²/s
 - with hydraulic fluid on the basis of mineral oils

2) The data are valid for values between the minimum required and maximum permissible rotational speed. It applies for external stimuli (e.g. diesel engine 2 to 8 times rotary frequency, cardan shaft twice the rotary frequency). The limit value is only valid for a single pump. The load capacity of the connection parts must be considered.

Permissible radial and axial loading of the drive shafts

Size		NG		18	23	28	37	45
Maximum radial force at a/2		$F_{q \max}$	N	1200	1200	1200	1500	1500
Maximum axial force		$\pm F_{ax \max}$	N	1000	1000	1000	1500	1500

Notice

- ▶ The values given are maximum values and do not apply to continuous operation.
- ▶ For drives with radial loading (pinion, V-belt drives), please contact us!

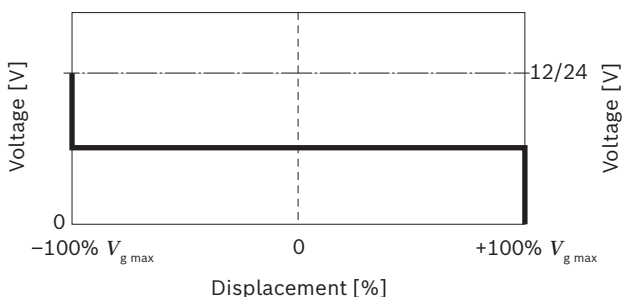
EZ – Two-point control, electric

The variable motor is set to $V_{g \max} +100\%$ or $V_{g \max} -100\%$ by actuating the switching solenoid. When de-energized, the axial piston units swivels to $V_{g \max} +100\%$, when energized to $V_{g \max} -100\%$.

The response time is extended via the in-built orifice, thus enabling smooth swiveling.

With each direction of rotation of the motor, the control pressure is taken at the high-pressure side **B**.

▼ Characteristic curve EZ



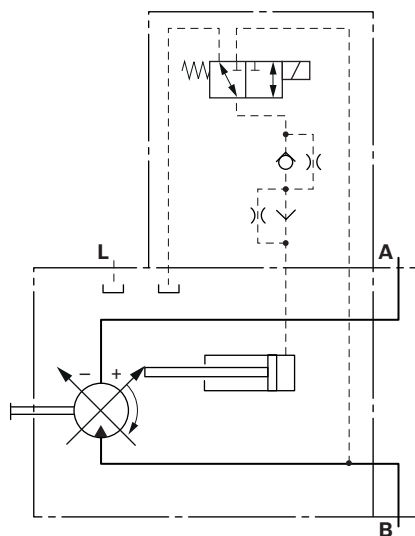
Influencing the swivel position

Swivel direction +100%		Swivel cradle position
De-energized	△	$+V_{g \max}$
Swivel direction -100%		
Energized	△	$-V_{g \max}$

Notice

- ▶ The A10VER variable speed motor can only be used in fan mode for reversing at $-100\% V_{g \max}$. Use at $-100\% V_{g \max}$ is not permitted for a longer period of time. If you have any questions, please contact your Bosch Rexroth contact.
- ▶ Observe the project planning notes on page 18 or the project planning and commissioning instructions 90363.

▼ Circuit diagram EZ6/EZ7



Solenoid data

Technical data, solenoids	EZ6	EZ7
Nominal voltage	12 V DC	24 V DC
Nominal current (at 20 °C)	1.5 A	0.8 A
Duty cycle	100 %	100 %

Type of protection: see connector version page 15

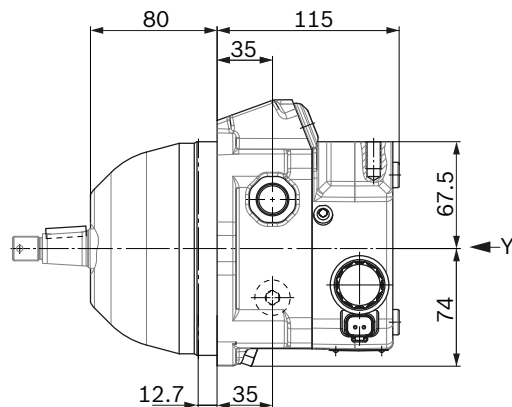
Ambient temperature range -20 °C to $+60\text{ °C}$

Please contact us if these temperatures cannot be observed.

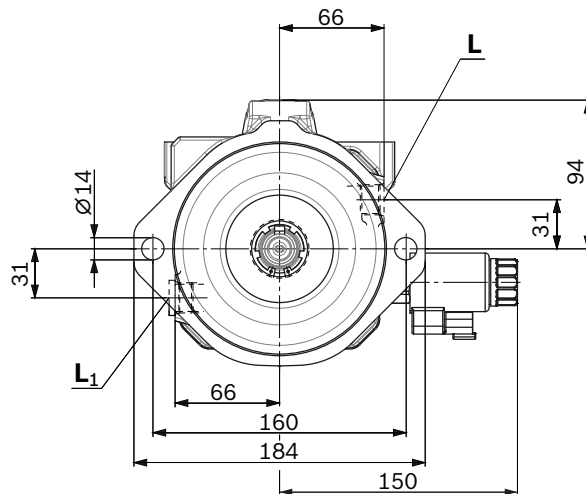
Dimensions, sizes 18, 23, 28

EZ6/EZ7 – Two-point control, electric with DEUTSCH connector, clockwise rotation, series 52

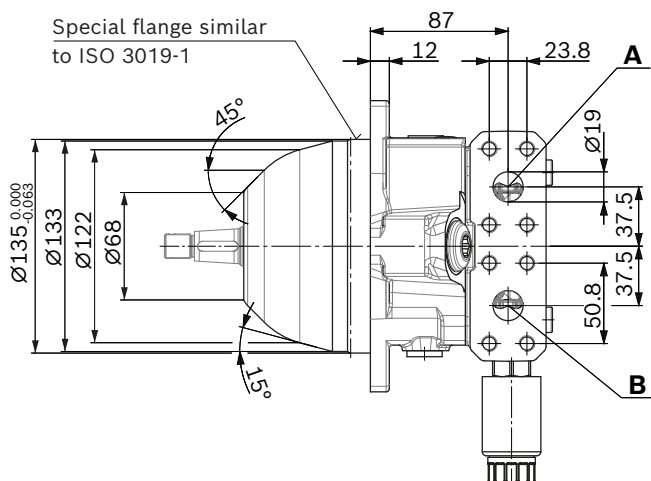
▼ Port plate 10N00/60N00



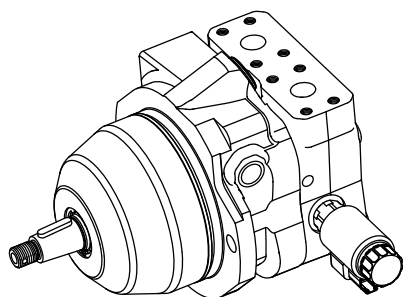
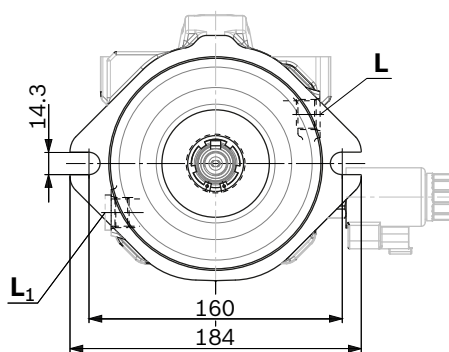
▼ Mounting flange F



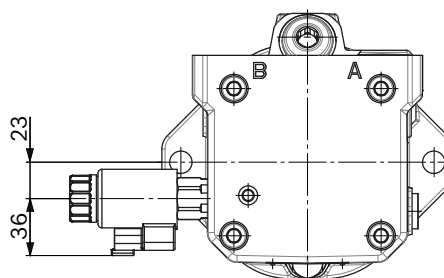
Special flange similar to ISO 3019-1



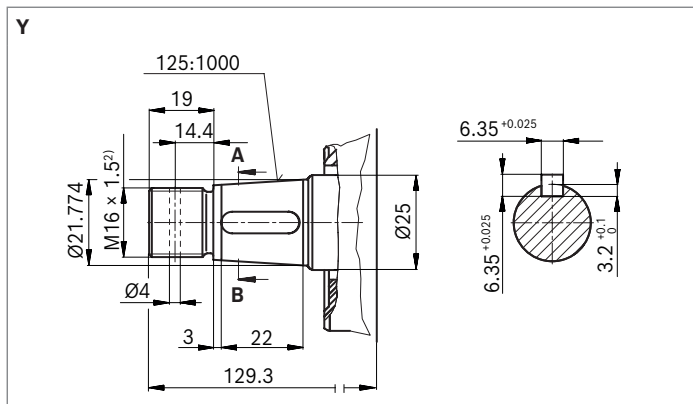
▼ Mounting flange U



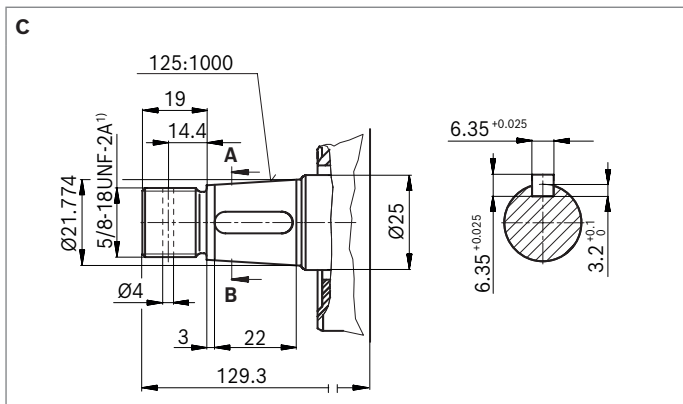
View Y



▼ Tapered shaft with shaft key, metric threaded bolt



▼ Tapered shaft with shaft key, imperial threaded bolt



Ports

Port plate 10		Standard	Size	p_{max} [bar] ³⁾	State ⁵⁾
A	Working port (high-pressure series) Fastening thread	ISO 6162-2 DIN 13	3/4 in (P19M) M10 × 1.5; 17 deep	30	O
B	Working port (high-pressure series) Fastening thread	ISO 6162-2 DIN 13	3/4 in (P19M) M10 × 1.5; 17 deep	350	O
L	Drain port	ISO 11926 ⁴⁾	3/4-16UNF-2B; 15 deep	2	O ⁶⁾
L₁	Drain port	ISO 11926 ⁴⁾	3/4-16UNF-2B; 15 deep	2	X ⁶⁾
Port plate 60		Standard	Size	p_{max} [bar] ³⁾	State ⁵⁾
A	Working port (high-pressure series) Fastening thread	ISO 6162-2 ASME B1.1	3/4 in (P19) 3/8-16UNC-2B; 21 deep	30	O
B	Working port (high-pressure series) Fastening thread	ISO 6162-2 ASME B1.1	3/4 in (P19) 3/8-16UNC-2B; 21 deep	350	O
L	Drain port	ISO 11926 ⁴⁾	3/4-16UNF-2B; 15 deep	2	O ⁶⁾
L₁	Drain port	ISO 11926 ⁴⁾	3/4-16UNF-2B; 15 deep	2	X ⁶⁾

1) Thread according to ASME B1.1

2) Thread according to DIN 13

3) Depending on the application, momentary pressure peaks can occur.
Keep this in mind when selecting measuring devices and fittings.

4) The countersink may be deeper than specified in the standard.

5) O = Must be connected (comes plugged)

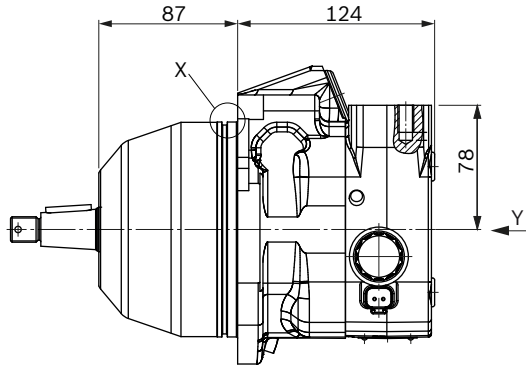
X = Plugged (in normal operation)

6) Depending on the installation position, **L** or **L₁** must be connected (also see installation instructions on page 16)

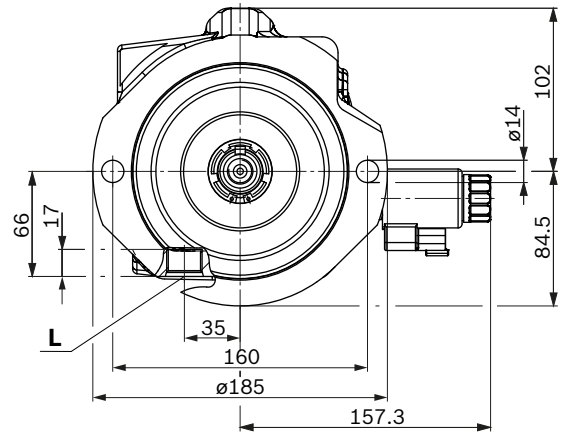
Dimensions, sizes 37 and 45

EZ6/EZ7 – Two-point control, electric with DEUTSCH connector, clockwise rotation, series 52

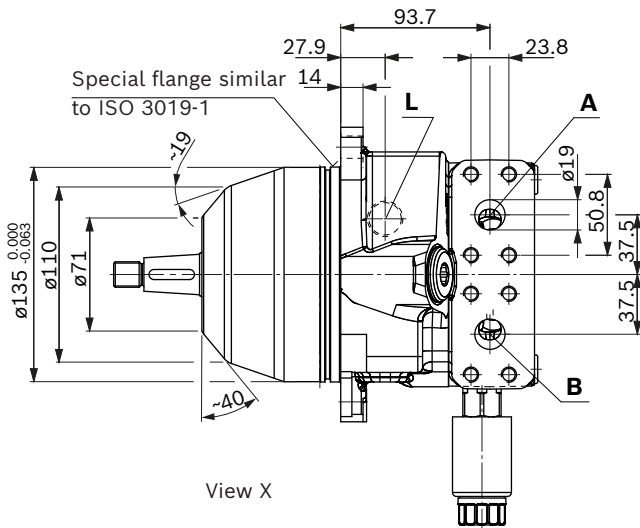
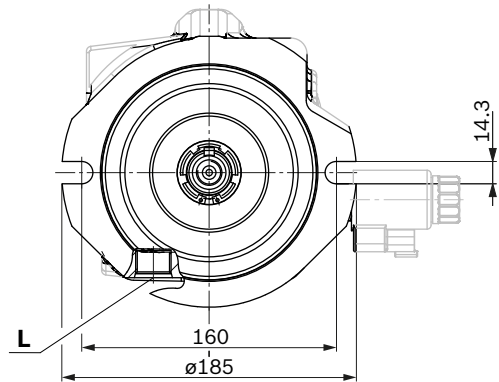
▼ Port plate 10N00/60N00



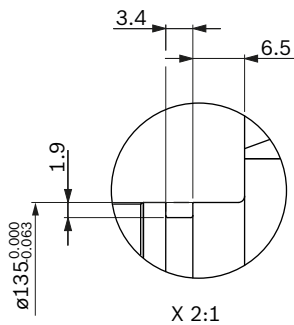
▼ Mounting flange F



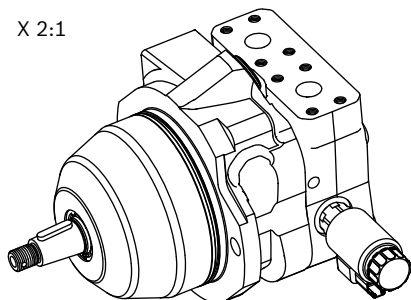
▼ Mounting flange U



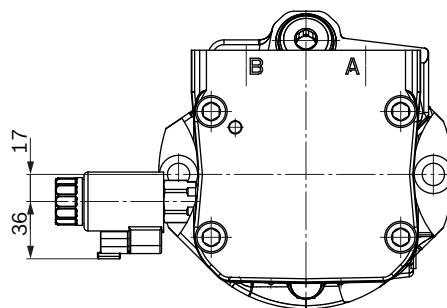
View X



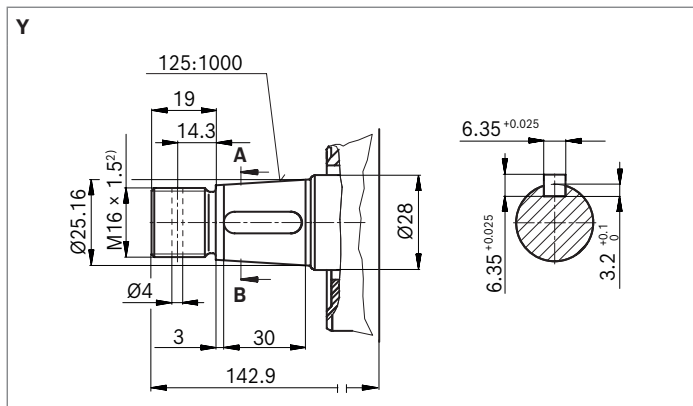
X 2:1



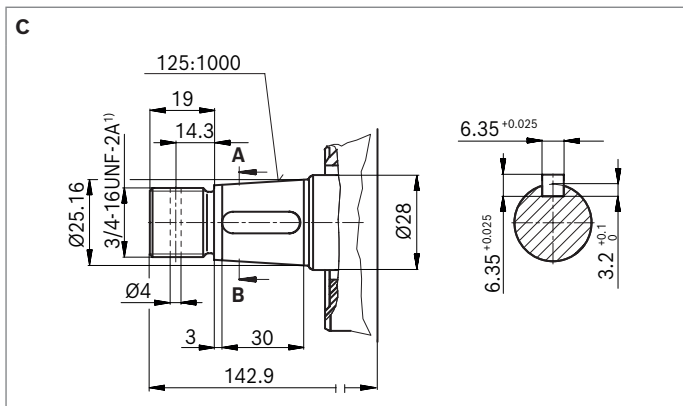
View Y



▼ **Tapered shaft with shaft key, metric threaded bolt**



▼ **Tapered shaft with shaft key, imperial threaded bolt**



Ports

Port plate 10		Standard	Size	p_{max} [bar] ³⁾	State ⁵⁾
A	Working port (high-pressure series) Fastening thread	ISO 6162-2 DIN 13	3/4 in (P19M) M10 × 1.5; 17 deep	30	O
B	Working port (high-pressure series) Fastening thread	ISO 6162-2 DIN 13	3/4 in (P19M) M10 × 1.5; 17 deep	350	O
L	Drain port	ISO 11926 ⁴⁾	7/8-14UNF-2B; 17 deep	2	O
Port plate 60		Standard	Size	p_{max} [bar] ³⁾	State ⁵⁾
A	Working port (high-pressure series) Fastening thread	ISO 6162-2 ASME B1.1	3/4 in (P19) 3/8-16UNC-2B; 21 deep	30	O
B	Working port (high-pressure series) Fastening thread	ISO 6162-2 ASME B1.1	3/4 in (P19) 3/8-16UNC-2B; 21 deep	350	O
L	Drain port	ISO 11926 ⁴⁾	7/8-14UNF-2B; 17 deep	2	O

1) Thread according to ASME B1.1

2) Thread according to DIN 13

3) Depending on the application, momentary pressure peaks can occur.

Keep this in mind when selecting measuring devices and fittings.

4) The countersink may be deeper than specified in the standard.

5) O = Must be connected (comes plugged)

X = Plugged (in normal operation)

Anti cavitation valve

Without pressure cut-off

Order option ...N002

When switching off the system, the anti cavitation valve ensures the motor of heavy-duty drives (e.g. hydrostatic fan drives) is supplied with hydraulic fluid until it comes to a standstill.

The valve is integrated in the port plate.

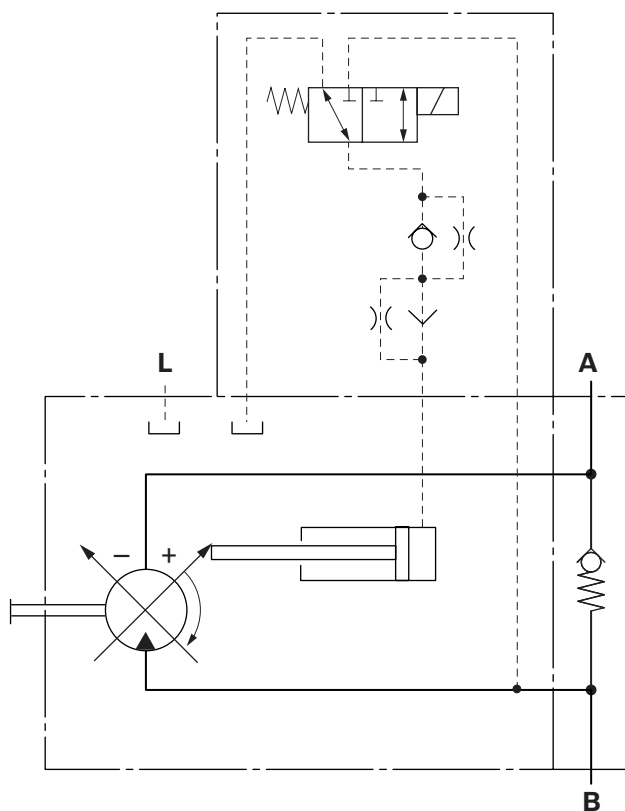
Notes

- ▶ Observe the direction of rotation of the unit during project planning.
- ▶ The standard direction of rotation is clockwise. Please contact us regarding counter-clockwise rotation.

The external unit dimensions correspond to the standard version, see the unit dimensions for the length dimensions.

▼ Circuit diagram

Clockwise rotation, pressure in port **B**



Speed sensing

Order option ...B

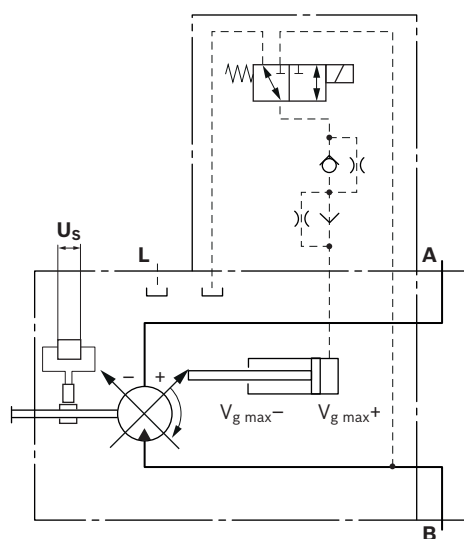
A signal proportional to the motor speed can be generated with the mounted DSA1 rotational speed sensor.

The DSA1 sensor registers the rotational speed and/or direction of rotation.

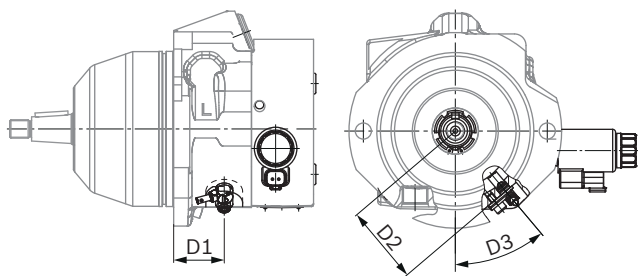
Type code, technical data, dimensions and details on the connector plus safety instructions about the sensor can be found in the relevant data sheet 95133 – DSA1.

The sensor is mounted on the port provided for this purpose with a mounting bolt.

▼ Circuit diagram



▼ Dimensions



NG	D1	D2	D3
18, 23, 28	–	–	–
37, 45	44.5	68.5	35°

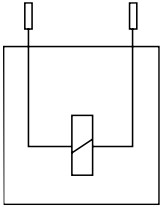
Connector for solenoids

DEUTSCH DT04-2P

Molded, 2-pin, without bidirectional suppressor diode
 The following type of protection ensues with the correct installed mating connector:

- ▶ IP67 (DIN/EN 60529) and
- ▶ IP69K (DIN 40050-9)

▼ Switching symbol



▼ Mating connector DEUTSCH DT06-2S-EP04

Consisting of	DT designation
1 housing	DT06-2S-EP04
1 wedge	W2S
2 sockets	0462-201-16141

The mating connector is not included in the scope of delivery.

This can be supplied by Bosch Rexroth on request (material number R902601804).

Notice

If necessary, you can change the position of the connector by turning the solenoid body.
 The procedure is defined in the instruction manual 91706-01-B.

Installation instructions

General

The axial piston unit must be filled with hydraulic fluid and air bled during commissioning and operation. This must also be observed following a longer standstill as the axial piston unit may empty via the hydraulic lines. The drain in the housing area must be discharged to the reservoir via the highest available leakage port (**L** or **L₁**). If this is not possible, separate drain lines must be laid if necessary.

To avoid transmission of structure-borne noise, decouple all connecting lines from all components that can vibrate (e.g. tank, frame parts) using elastic elements. In all operating conditions, the drain line must flow into the reservoir below the minimum fluid level.

For key, see page 17.

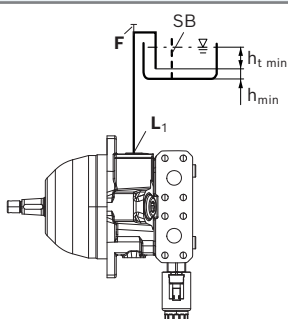
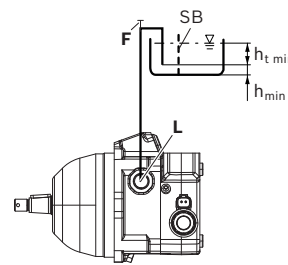
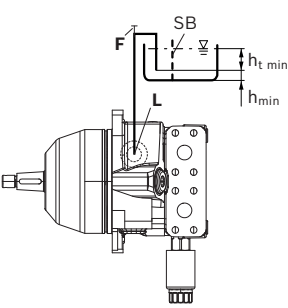
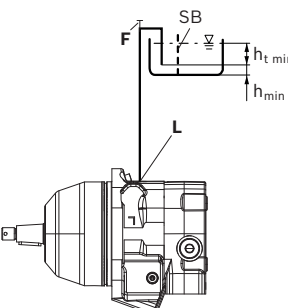
Installation position

See the following examples **1** to **8**.

Further installation positions are available upon request. Recommended installation position: **2** and **4**

Below-reservoir installation (standard)

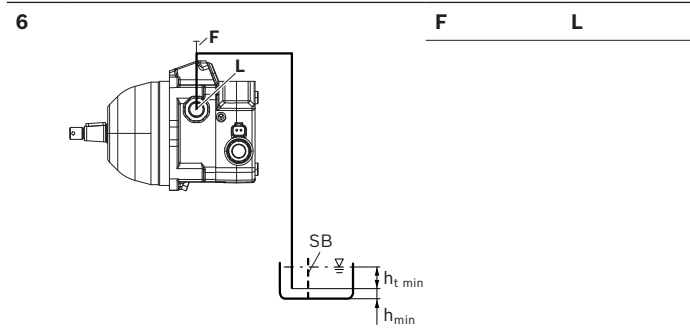
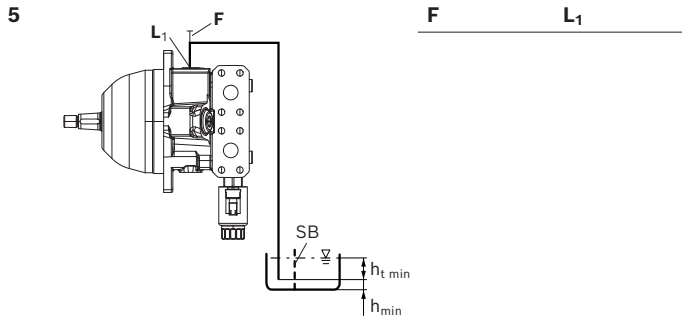
Below-reservoir installation is when the axial piston unit is installed outside of the reservoir below the minimum fluid level.

Installation position NG 18 to 28	Air bleed	Filling
1 	F	L₁
2 	F	L
Installation position NG 37 and 45	Air bleed	Filling
3 	F	L
4 	F	L

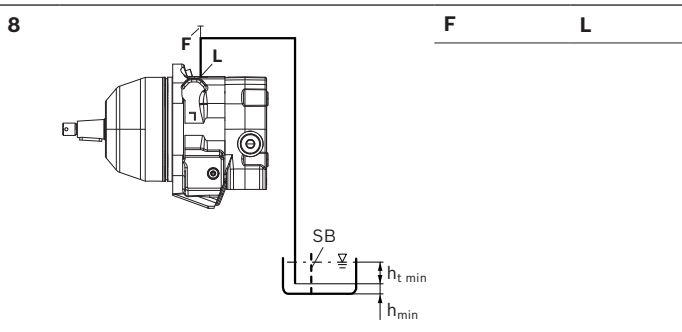
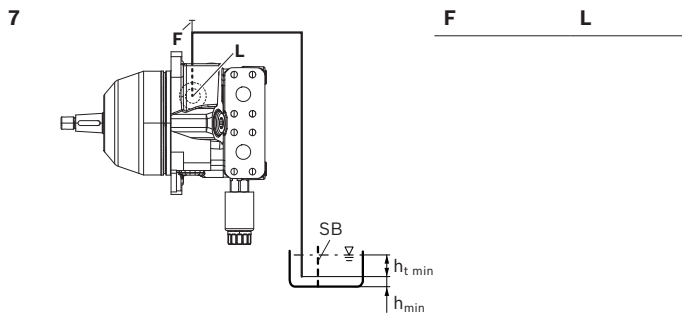
Above-reservoir installation

Above-reservoir installation means that the axial piston unit is installed above the minimum fluid level of the reservoir.

Installation position NG 18 to 28



Installation position NG 37 and 45



Key

F	Filling / Air bleeding
L, L₁	Drain port
SB	Baffle (baffle plate)
$h_{t\ min}$	Minimum required immersion depth (200 mm)
h_{min}	Minimum required distance to reservoir bottom (100 mm)

Notice

Port **F** is part of the external piping and must be provided by the customer to make filling and air bleeding easier.

Project planning notes

- ▶ The A10VER axial piston variable motor is designed to be used in open circuit.
- ▶ The project planning, assembly and commissioning of the axial piston unit require the involvement of qualified skilled persons.
- ▶ Before using the axial piston unit, please read the corresponding instruction manual completely and thoroughly. If necessary, this can be requested from Bosch Rexroth.
- ▶ Before finalizing your design, please request a binding installation drawing. If you need a 3D installation model, please consult the responsible contact person at Bosch Rexroth.
- ▶ The specified data and notes contained herein must be observed.
- ▶ Depending on the operating conditions of the axial piston unit (working pressure, fluid temperature), the characteristic curve may shift.
- ▶ The characteristic curve may also shift due to the dither frequency or control electronics.
- ▶ Preservation: Our axial piston units are supplied as standard with preservative protection for a maximum of 12 months. If longer preservation is required (maximum 24 months), please specify this in plain text when placing your order. The preservation periods apply under optimal storage conditions, which can be found in data sheet 90312 or in the instruction manual.
- ▶ Not all versions of the product are approved for use in a safety function according to ISO 13849. Please consult the proper contact at Bosch Rexroth if you require reliability parameters (e.g. $MTTF_d$) for functional safety.
- ▶ Depending on the type of control used, electromagnetic effects can be produced when using solenoids. The use of the direct current (DC) on the electromagnet does not produce any electromagnetic interference (EMI), nor is the electromagnet influenced by EMI. Potential electromagnetic interference (EMI) exists if the solenoid is energized with a modulated direct current (e.g. PWM signal). The machine manufacturer should conduct appropriate tests and take appropriate measures to ensure that other components or operators (e.g. with a pacemaker) are not affected by this potentiality.
- ▶ Pressure controllers are not safeguards against pressure overload. A pressure relief valve is to be fitted in the hydraulic system.
- ▶ Please note that a hydraulic system is a vibrating system. This can lead, for example, to the natural frequency within the hydraulic system being excited during operation at constant speed over a longer period of time. The excitation frequency of the pump is 9 times the speed frequency.
- ▶ This can be prevented, for example, by suitable design of the hydraulic lines.
- ▶ Please note the details regarding the tightening torques of port threads and other threaded joints in the instruction manual.
- ▶ Working ports:
 - The ports and fastening threads are designed for the specified maximum pressure. The machine or system manufacturer must ensure the connecting elements and lines correspond to the specified application conditions (pressure, flow, hydraulic fluid, temperature) with the necessary safety factors.
 - The working ports and function ports are only intended to accommodate hydraulic lines.

System solution for hydrostatic fan drives with reversing function

AFC30 software

The BODAS AFC30 is a standard software solution integrated in the RC4-5/30 control unit from Rexroth for controlling hydrostatic fan drives with fixed or variable hydraulic pumps. The AFC30 is designed to control a fan drive in an open hydraulic circuit. The performance requirement of the fan can be modified for up to 6 temperature signals (analog/J1939). The AFC30 can be used with 12 V and 24 V systems. As the AFC30 provides the cooling output according to requirements, fuel consumption is significantly reduced compared with fan drive systems that are not proportionally controlled.

Further information on this can be found in data sheets

- ▶ 95362 (application software fan speed control AFC30)
and
- ▶ 95205 (BODAS controller RC4-5, series 30)

Safety instructions

- ▶ During and shortly after operation, there is a risk of burning on the axial piston unit, especially on the solenoids. Take the appropriate safety measures (e.g. by wearing protective clothing).
- ▶ Moving parts in control equipment (e.g. valve spools) can get stuck in an undefined position due to contamination (e.g. impure hydraulic fluid, abrasion or residual dirt from components). As a result, the hydraulic fluid flow and the build-up of torque in the axial piston unit can no longer respond correctly to the operator's specifications. Even the use of various filter elements (external or internal flow filtration) will not rule out a fault but merely reduce the risk. The machine/system manufacturer should test whether additional measures are required on the machine for the relevant application in order to bring the driven consumer into a safe position (e.g. safe stop) and make sure any measures are properly implemented.

Bosch Rexroth AG

An den Kelterwiesen 14
72160 Horb a.N.
Germany
Tel. +49 7451 92-0
sales.mobile.horb@boschrexroth.de
www.boschrexroth.com

© Bosch Rexroth AG 2021. All rights reserved, also regarding any disposal, exploitation, reproduction, editing, distribution, as well as in the event of applications for industrial property rights. The data specified above only serve to describe the product. No statements concerning a certain condition or suitability for a certain application can be derived from our information. The information given does not release the user from the obligation of own judgment and verification. It must be remembered that our products are subject to a natural process of wear and aging.